

NORTH POINT TO BE PROVIDED ON DRAWING



NOTE:-
SEWER PIPE MATERIAL TO BE INCLUDED IN ANNOTATION
e.g. 150mmØ WW uPVC SN8 SEWER.
SEWERS TO COMPLY WITH PIPE MATERIAL TYPES OUTLINED IN THE CODE OF PRACTICE FOR WASTEWATER INFRASTRUCTURE.
CONCRETE: TO IS EN 1916 (2002), BS 5911, PART 1 (2002-2010) AND IS 6 (2004)
THERMOPLASTIC STRUCTURED WALL PIPES: TO IS EN 13476 (2007/2009) (SN8 STIFFNESS CLASS).
UNPLASTICISED PVC: TO IS EN 1401 (2009-2012) (SN8 STIFFNESS CLASS).
POLYETHYLENE: TO IS EN 12201 AND IS EN 12201 PART 3.
DUCTILE IRON: TO IS EN 598.

Manhole Schedule:-

Type	Location Co-Ords (ING)	Cover Level	Invert Level
Ex FMH 250	X = xxxxx.xxx Y = yyyyyy.yyy	xx.xxxm	xx.xxxm
MH F03	X = xxxxx.xxx Y = yyyyyy.yyy	xx.xxxm	xx.xxxm
MH F02	X = xxxxx.xxx Y = yyyyyy.yyy	xx.xxxm	xx.xxxm
MH F01	X = xxxxx.xxx Y = yyyyyy.yyy	xx.xxxm	xx.xxxm
Ex FMH 335	X = xxxxx.xxx Y = yyyyyy.yyy	xx.xxxm	xx.xxxm

TABULATED SCHEDULE SHOWING COVER LEVELS, INVERT LEVELS AND COORDINATES TO BE PROVIDED ON DRAWING (Excel Format Preferably)

LEGEND:

- PROPOSED WASTEWATER MANHOLE
- PROPOSED INSPECTION CHAMBER & WASTEWATER SERVICE CONNECTION
- WASTEWATER SEWER TO BE MAINTAINED
- WASTEWATER SEWER TO BE ABANDONED
- PROPOSED WASTEWATER SEWER
- PROPOSED WASTEWATER RISING MAIN
- PROPOSED WASTEWATER PUMPING STATION
- EXISTING WASTEWATER SEWER & MANHOLE
- EXISTING WASTEWATER RISING MAIN
- EXISTING WASTEWATER PUMPING STATION
- SYMBOLS LEGEND TO BE PROVIDED ON DRAWING DETAILS
- SITE BOUNDARY

NOTES:

- ALL PIPE MATERIALS SHALL BE SPECIFIED ON THE RELEVANT DRAWINGS, & SHALL COMPLY WITH THE REQUIREMENTS OF SECTION 3.13 OF THE CODE OF PRACTICE FOR WASTEWATER INFRASTRUCTURE.

Separation Distances:-

Separation distances must be clearly stated on drawings. They must indicate the clear distance from external wall of pipe to adjacent external wall of service or structure.

For guidance on separation distance requirements please refer to the following documents:
Code of Practice for Water Infrastructure - Section 3.6
Code of Practice for Wastewater Infrastructure - Section 3.5.9 to 3.5.21
Water Infrastructure Standard Details - STD-W-11 and STD-W-12
Wastewater Infrastructure Standard Details - STD-WW-05, STD-WW-05A, STD-WW-06 and STD-WW-06A.

The separation distances outlined in the Codes of Practice and Standard Details are minimum requirements. Specific separation clearance distances in excess of these minima shall be provided for services such as gas, electricity, fibre-optic or oil filled cables as the case may be. The particular utility providers shall be consulted to determine these minimum separation distances and evidence of this consultation, with the specified separation distances, shall be provided to Irish Water at design submission stage. For example, the minimum separation distances for Gas Networks Ireland infrastructure shall be in accordance with IS329 'Gas Distribution Mains' and IS328 'Code of Practice for Gas Transmission Mains' as amended/updated.

DRAWING TO BE REVISED ACCORDINGLY			
REV. A	MAR 2021	DESIGN SUBMISSION	BY CHKD/APP



Development
DEVELOPMENT TITLE TO BE CLEARLY STATED.

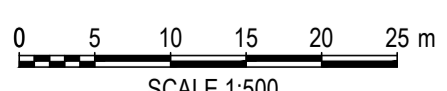
Developer / Consultant
NAME AND ADDRESS OF DEVELOPER AND CONSULTANT TO BE CLEARLY SHOWN.

Title
WASTEWATER AS-BUILT SITE LAYOUT.
DRAWING TITLE TO BE CLEARLY STATED.

Drawn	RH	Scale	AS SHOWN	Drawing Number	Rev.
Chkd.	RH	Date	03/2021	WW-01	A
Apprd.	MF	Status	DESIGN		

WASTEWATER DESIGN SUBMISSION SAMPLE DRAWING.

1:500 SITE LAYOUT SHOWING DIVERTED WASTEWATER SEWER

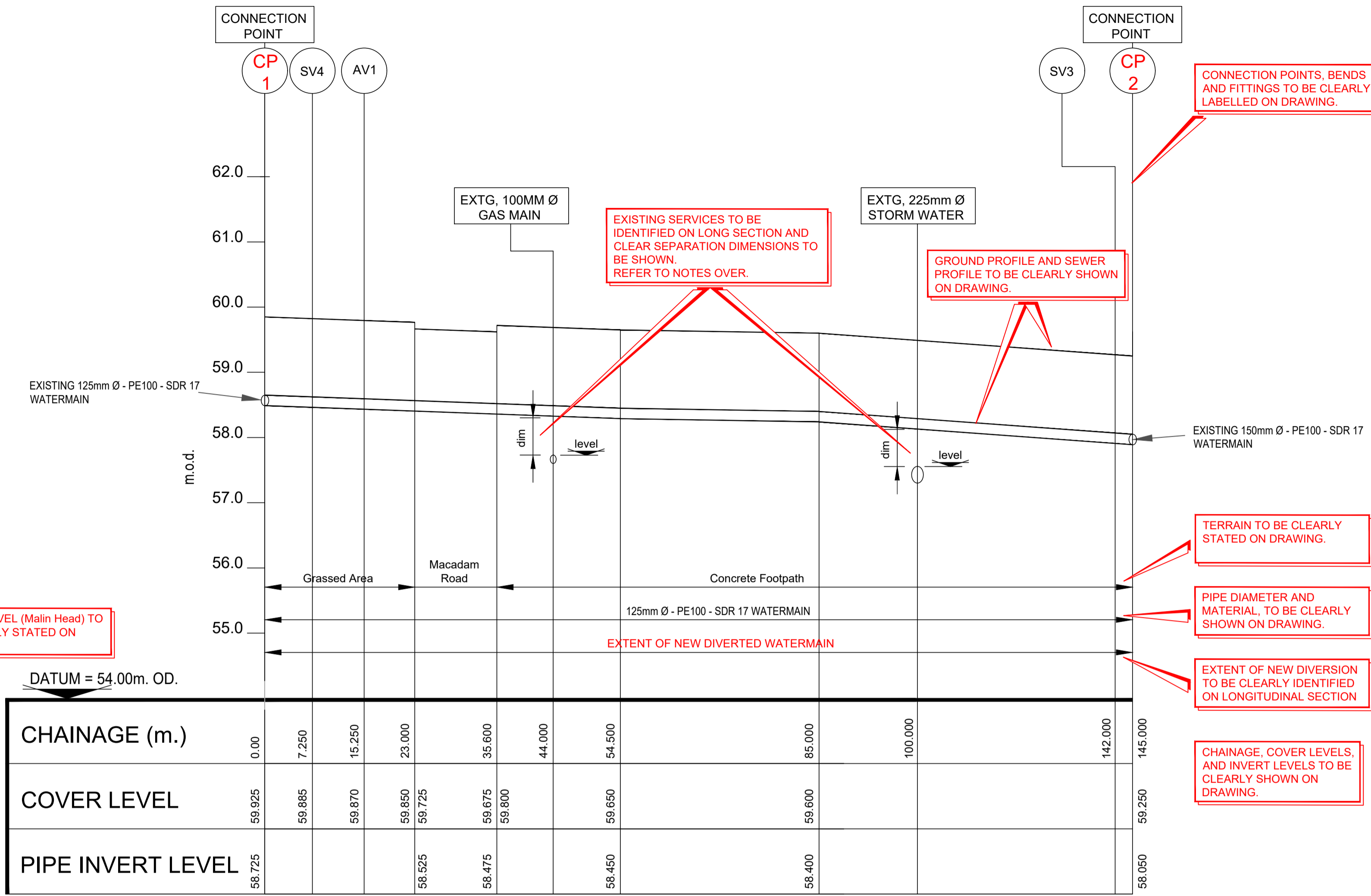


OS Ordnance Survey
ORDNANCE SURVEY IRELAND LICENSE No. EN 0083316
© ORDNANCE SURVEY IRELAND & GOVERNMENT OF IRELAND
OS MAP REF: 1234-56

ORDNANCE SURVEY IRELAND LICENSE No. EN 0083316
© ORDNANCE SURVEY IRELAND & GOVERNMENT OF IRELAND
OS MAP REF: 1234-56

d:\irish\water\04 - as built\checks\08 - diversions samples\diversions design submission sample 01.dwg 24/03/2021

No part of this drawing may be reproduced or transmitted in any form or stored in any retrieval system of any nature without the written permission of Irish Water as copyright holder except as agreed for use on the project for which the document was originally issued.



SAMPLE WATERMAIN LONGITUDINAL SECTION

Horizontal Scale = 1:500, Vertical Scale = 1:50.

LAYOUT / VIEW TITLES TO BE CLEARLY STATED ON DRAWING.

DATUM LEVEL (Malin Head) TO BE CLEARLY STATED ON DRAWING.

DATUM = 54.00m. OD.

EXISTING SERVICES TO BE IDENTIFIED ON LONG SECTION AND CLEAR SEPARATION DIMENSIONS TO BE SHOWN. REFER TO NOTES OVER.

GROUND PROFILE AND SEWER PROFILE TO BE CLEARLY SHOWN ON DRAWING.

CONNECTION POINTS, BENDS AND FITTINGS TO BE CLEARLY LABELLED ON DRAWING.

TERRAIN TO BE CLEARLY STATED ON DRAWING.

PIPE DIAMETER AND MATERIAL TO BE CLEARLY SHOWN ON DRAWING.

EXTENT OF NEW DIVERSION TO BE CLEARLY IDENTIFIED ON LONGITUDINAL SECTION

CHAINAGE, COVER LEVELS, AND INVERT LEVELS TO BE CLEARLY SHOWN ON DRAWING.

NOTES:

1. MANHOLE TYPES TO BE NOMINATED ON DRAWINGS
2. SEWER MATERIAL TO BE NOMINATED ON LONGITUDINAL SECTION.
3. FOR WASTEWATER SERVICE CONNECTION REFER ALSO TO STW-WW-01, STW-WW-03 AND STD-WW-13

Separation Distances:-

Separation distances must be clearly stated on drawings. They must indicate the clear distance from external wall of pipe to adjacent external wall of service or structure.

For guidance on separation distance requirements please refer to the following documents:
 Code of Practice for Water Infrastructure - Section 3.6
 Code of Practice for Wastewater Infrastructure - Section 3.5.9 to 3.5.21
 Water Infrastructure Standard Details - STD-W-11 and STD-W-12
 Wastewater Infrastructure Standard Details - STD-WW-05, STD-WW-05A, STD-WW-06 and STD-WW-06A.

The separation distances outlined in the Codes of Practice and Standard Details are minimum requirements. Specific separation clearance distances in excess of these minima shall be provided for services such as gas, electricity, fibre-optic or oil filled cables as the case may be. The particular utility providers shall be consulted to determine these minimum separation distances and evidence of this consultation, with the specified separation distances, shall be provided to Irish Water at design submission stage. For example, the minimum separation distances for Gas Networks Ireland infrastructure shall be in accordance with IS329 'Gas Distribution Mains' and IS328 'Code of Practice for Gas Transmission Mains' as amended/updated.

DRAWING TO BE REVISED ACCORDINGLY			
A	MAR 2021	DESIGN SUBMISSION	RH RH MF
REV.	DATE	DESCRIPTION	BY CHKD APPR



Local Authority

DEVELOPMENT TITLE TO BE CLEARLY STATED.

Consultant

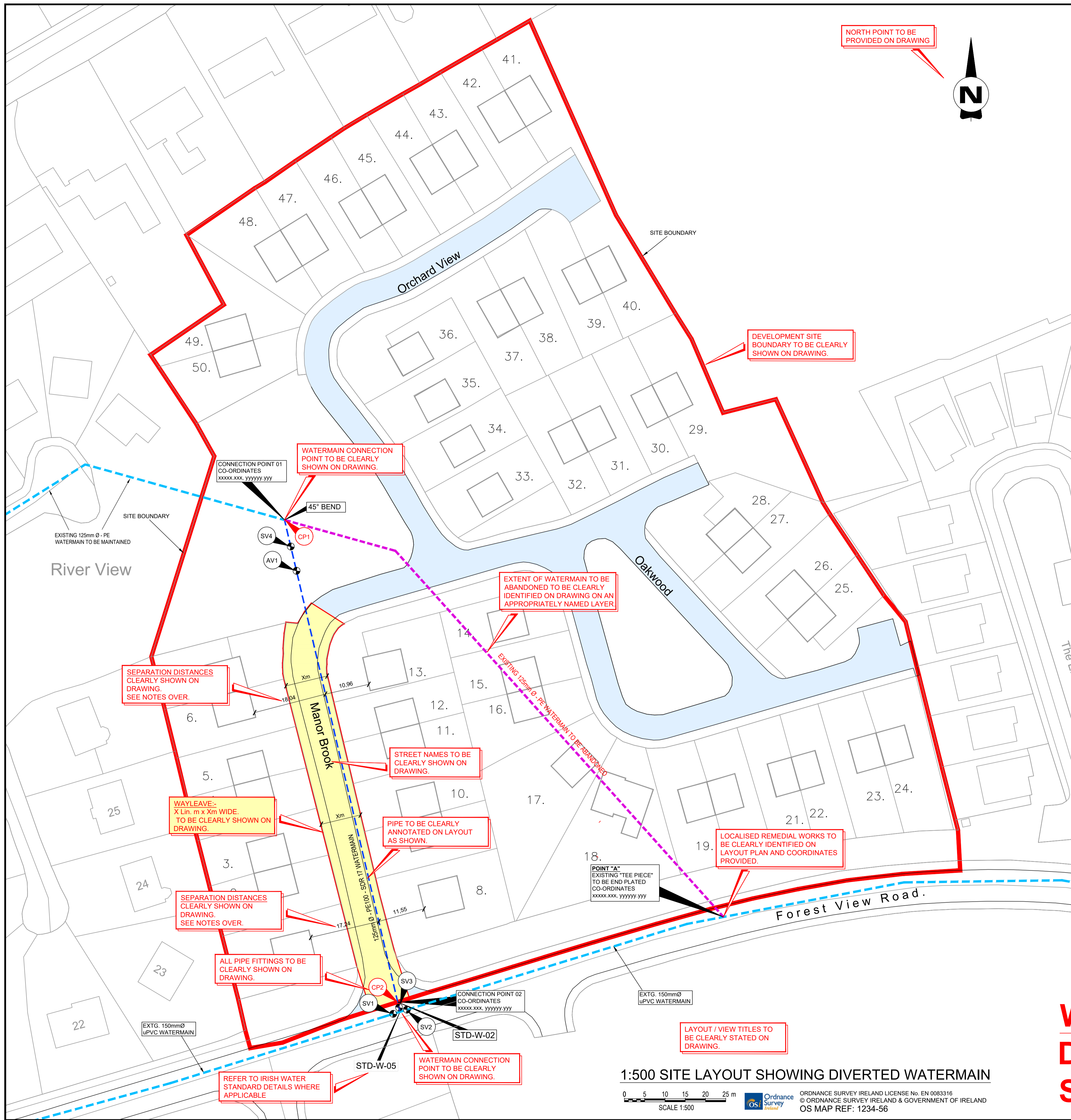
NAME AND ADDRESS OF DEVELOPER AND CONSULTANT TO BE CLEARLY SHOWN.

SAMPLE LONGITUDINAL SECTION

DRAWING TITLE TO BE CLEARLY STATED.

Drawn	RH	Scale	AS SHOWN	Drawing Number	Rev.
Chkd.	RH	Date	03/2021	W-02	A
Appr.	MF	Status	DESIGN		

**WATERMAIN
DESIGN SUBMISSION
SAMPLE DRAWING.**



NORTH POINT TO BE PROVIDED ON DRAWING



Watermain Pipework Specification:-

MDPE and HDPE pipes shall be of a type PE-80 and have an SDR-11 or SDR-17 rating. They shall conform to IS EN 12201: Part 1 and Part 2 (Plastic Systems for Water Supply, Drainage and Sewerage Under Pressure - Part 1, General, and Part 2, Pipes) and I.S. EN 12201-3 (Plastic Systems for Water Supply, Drainage and Sewerage Under Pressure - Part 3: Fittings).

HPPE pipes shall be of a type PE-100 and have an SDR-11 or SDR-17 rating. They shall conform to IS EN 12201: Part 1 and Part 2 (Plastic Systems for Water Supply, Drainage and Sewerage Under Pressure - Part 1, General, and Part 2, Pipes) and I.S. EN 12201-3 (Plastic Systems for Water Supply, Drainage and Sewerage Under Pressure - Part 3: Fittings).

DUCTILE IRON pipes and fittings to be in accordance with IS EN 545

Note:- Watermain pipework specifications to comply with Irish Water Code of Practice Section 3.9.

LEGEND:

- STD-W-04 REFER TO STD-W-04 FOR DETAILS
- SITE BOUNDARY
- WATERMAIN TO BE MAINTAINED
- WATERMAIN TO BE ABANDONED
- NEW WATERMAIN DIVERSION
- ROAD LEVEL
- SLUICE VALVE
- AIR VALVE
- HYDRANT
- WASH OUT HYDRANT
- AIR VALVE
- BULK METER CHAMBER
- CONNECTION POINT
- PIPE WELD LOCATIONS
- STANDARD DETAIL REFERENCE

NOTES:

- ALL PIPE MATERIALS SHALL BE SPECIFIED ON THE RELEVANT DRAWINGS, & SHALL COMPLY WITH THE REQUIREMENTS OF SECTION 3.9 OF THE CODE OF PRACTICE FOR WATER INFRASTRUCTURE.

Separation Distances:-

Separation distances must be clearly stated on drawings. They must indicate the clear distance from external wall of pipe to adjacent external wall of service or structure.

For guidance on separation distance requirements please refer to the following documents:
 Code of Practice for Water Infrastructure - Section 3.6
 Code of Practice for Wastewater Infrastructure - Section 3.5.9 to 3.5.21
 Water Infrastructure Standard Details - STD-W-11 and STD-W-12
 Wastewater Infrastructure Standard Details - STD-WW-05, STD-WW-05A, STD-WW-06 and STD-WW-06A.

The separation distances outlined in the Codes of Practice and Standard Details are minimum requirements. Specific separation clearance distances in excess of these minima shall be provided for services such as gas, electricity, fibre-optic or oil filled cables as the case may be. The particular utility providers shall be consulted to determine these minimum separation distances and evidence of this consultation, with the specified separation distances, shall be provided to Irish Water at design submission stage. For example, the minimum separation distances for Gas Networks Ireland infrastructure shall be in accordance with IS329 'Gas Distribution Mains' and IS328 'Code of Practice for Gas Transmission Mains' as amended/updated.

DRAWING TO BE REVISED ACCORDINGLY					
A	MAR 2021	DESIGN SUBMISSION	RH	RH	MF
REV.	DATE	DESCRIPTION	BY	CHKD	APPR



Development

DEVELOPMENT TITLE TO BE CLEARLY STATED.

Developer / Consultant

NAME AND ADDRESS OF DEVELOPER AND CONSULTANT TO BE CLEARLY SHOWN.

Title

WATERMAIN DIVERSION AS-BUILT LAYOUT.

DRAWING TITLE TO BE CLEARLY STATED.

Drawn	RH	Scale	AS SHOWN	Drawing Number	Rev.
Chkd.	RH	Date	03/2021	W-01	A
Apprd.	MF	Status	DESIGN		

NOTE:- AT DESIGN SUBMISSION STAGE, DRAWINGS AND COORDINATES ORIENTATED TO ITM GRID REFERENCE ARE ACCEPTABLE.

WATERMAIN DESIGN SUBMISSION SAMPLE DRAWING.

1:500 SITE LAYOUT SHOWING DIVERTED WATERMAIN

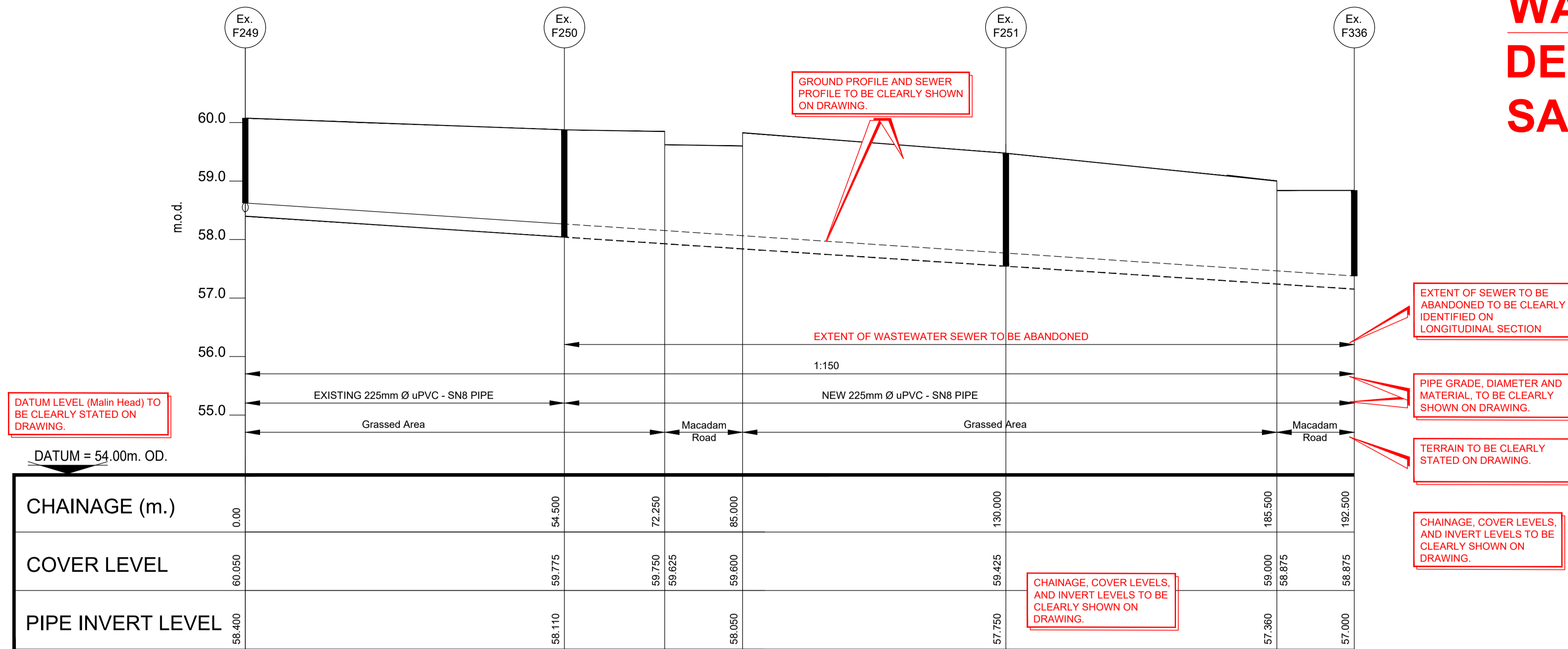
0 5 10 15 20 25 m
SCALE 1:500

Ordnance Survey IRELAND LICENSE No. EN 0083316
 © ORDNANCE SURVEY IRELAND & GOVERNMENT OF IRELAND
 OS MAP REF: 1234-56

d:\irish\water\04 - as built\checks\08 - diversions samples\diversions design submission sample 01.dwg 24/03/2021

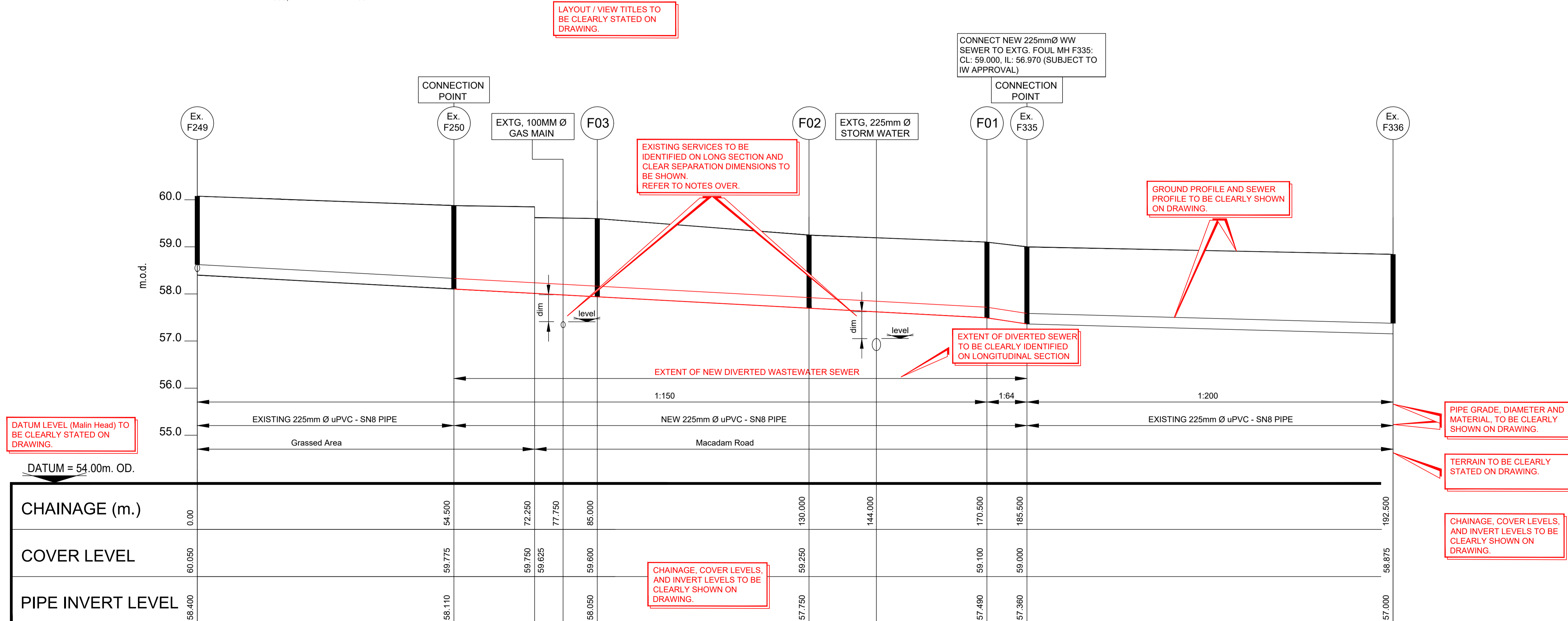
No part of this drawing may be reproduced or transmitted in any form or stored in any retrieval system of any nature without the written permission of Irish Water as copyright holder except as agreed for use on the project for which the document was originally issued.

WASTEWATER DESIGN SUBMISSION SAMPLE DRAWING.



SAMPLE WASTEWATER LONGITUDINAL SECTION SHOWING EXTENT OF SEWER TO BE ABANDONED

Horizontal Scale = 1:500, Vertical Scale = 1:50.



SAMPLE WASTEWATER LONGITUDINAL SECTION SHOWING EXTENT OF NEW DIVERTED SEWER.

Horizontal Scale = 1:500, Vertical Scale = 1:50.

NOTES:

1. MANHOLE TYPES TO BE NOMINATED ON DRAWINGS
2. SEWER MATERIAL TO BE NOMINATED ON LONGITUDINAL SECTION.
3. FOR WASTEWATER SERVICE CONNECTION REFER ALSO TO STW-WW-01, STW-WW-03 AND STD-WW-13

Separation Distances:-

Separation distances must be clearly stated on drawings. They must indicate the clear distance from external wall of pipe to adjacent external wall of service or structure.

For guidance on separation distance requirements please refer to the following documents:
Code of Practice for Water Infrastructure - Section 3.6
Code of Practice for Wastewater Infrastructure - Section 3.5.9 to 3.5.21

Water Infrastructure Standard Details - STD-W-11 and STD-W-12

Wastewater Infrastructure Standard Details - STD-WW-05, STD-WW-05A, STD-WW-06 and STD-WW-06A.

The separation distances outlined in the Codes of Practice and Standard Details are minimum requirements. Specific separation clearance distances in excess of these minima shall be provided for services such as gas, electricity, fibre-optic or oil filled cables as the case may be. The particular utility providers shall be consulted to determine these minimum separation distances and evidence of this consultation, with the specified separation distances, shall be provided to Irish Water at design submission stage. For example, the minimum separation distances for Gas Networks Ireland infrastructure shall be in accordance with IS329 'Gas Distribution Mains' and IS328 'Code of Practice for Gas Transmission Mains' as amended/updated.

REV.	DATE	DESCRIPTION	BY	CHKD	APPD
A	FEB 2020	DESIGN SUBMISSION	RH	RH	TOC



Local Authority

DEVELOPMENT TITLE TO BE CLEARLY STATED.

Consultant

NAME AND ADDRESS OF DEVELOPER AND CONSULTANT TO BE CLEARLY SHOWN.

SAMPLE LONGITUDINAL SECTION

DRAWING TITLE TO BE CLEARLY STATED.

Drawn	Scale	AS SHOWN	Drawing Number	Rev.
RH	AS SHOWN	AS SHOWN	WW-02	A
Chd.	Date	02/2020		
Appd.	Status	AS-BUILT		

d:\irish water\04 - as built checks\08 - diversions samples\diversions design submission\sample 02 long sections\dwg 241632021

No part of this drawing may be reproduced or transmitted in any form or stored in any retrieval system of any nature without the written permission of Irish Water as copyright holder except as agreed for use on the project for which the document was originally issued.