



# **Greater Dublin Drainage**

## **Alternative Sites Assessment and Route Selection Report (Phase 2) Emerging Preferred Sites and Routes**

*Peter O'Reilly  
Project Engineer*

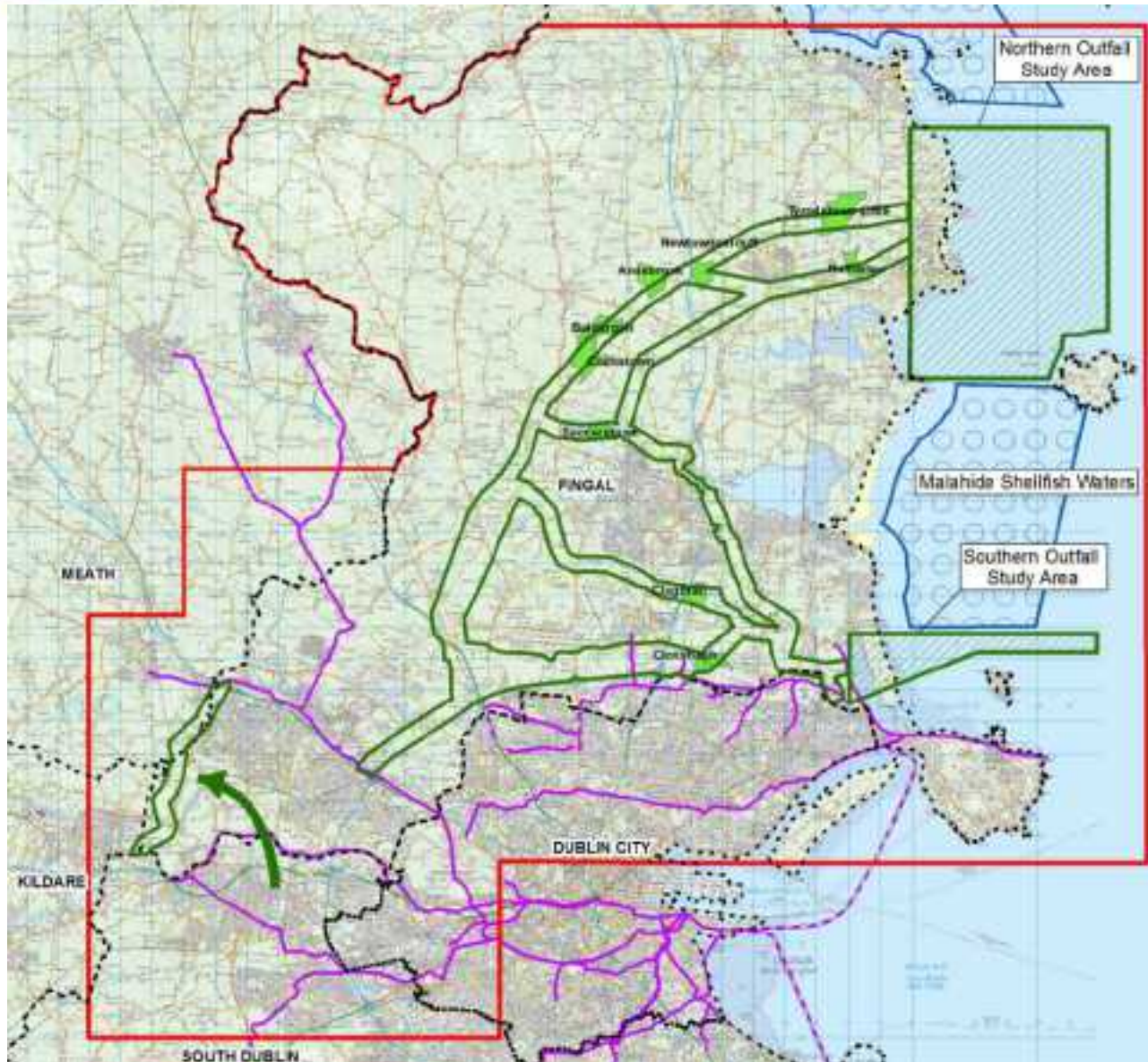
*Ciaran O'Keeffe  
Project Manager Jacobs/Tobin*

*FCC 14/05/12*

# ASA Methodology

- **Phase 1 – Preliminary Screening of Study Area**
  - Shortlist of 9nr Land Parcels, Pipeline Corridors & Marine Outfalls
  
- **Phase 2 – Assessment of Shortlisted Sites & Routes**
  - 3nr emerging Preferred Site Options
  
- **Phase 3 – Consultation on Emerging Preferred Site Options**
  
- **Phase 4 – Selection of Preferred Site Option**

# ASA - Phase 1

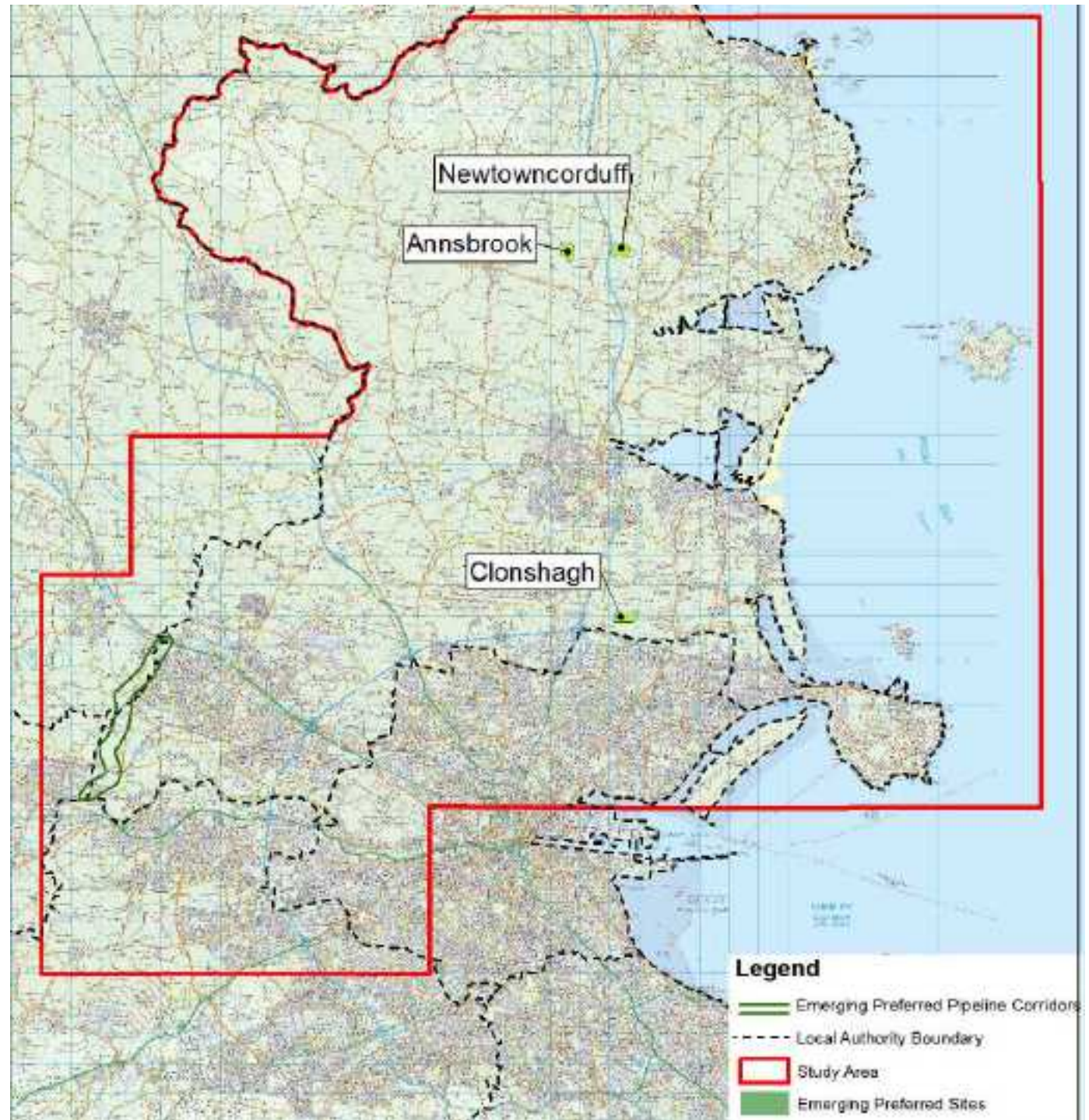


# ASA –Phase 2

- **Identification of Emerging Preferred Site Options**
  - (Based on Environmental & Technical Assessment)
- **Agreed Methodology**
- **Agreed Environmental & Technical Criteria**
- **Consideration of Issues & Concerns Raised by the General Public**



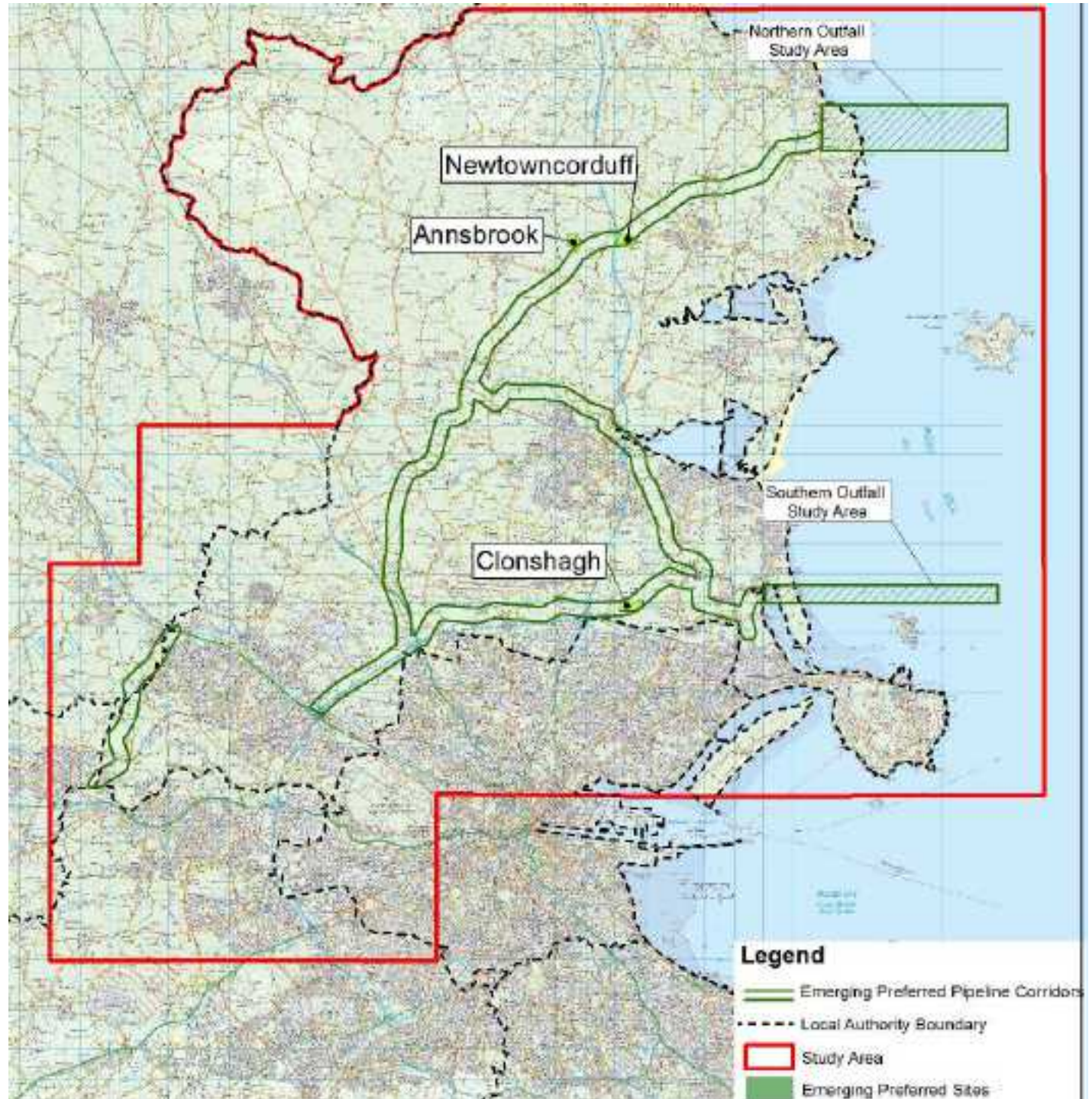
# Emerging Preferred Sites



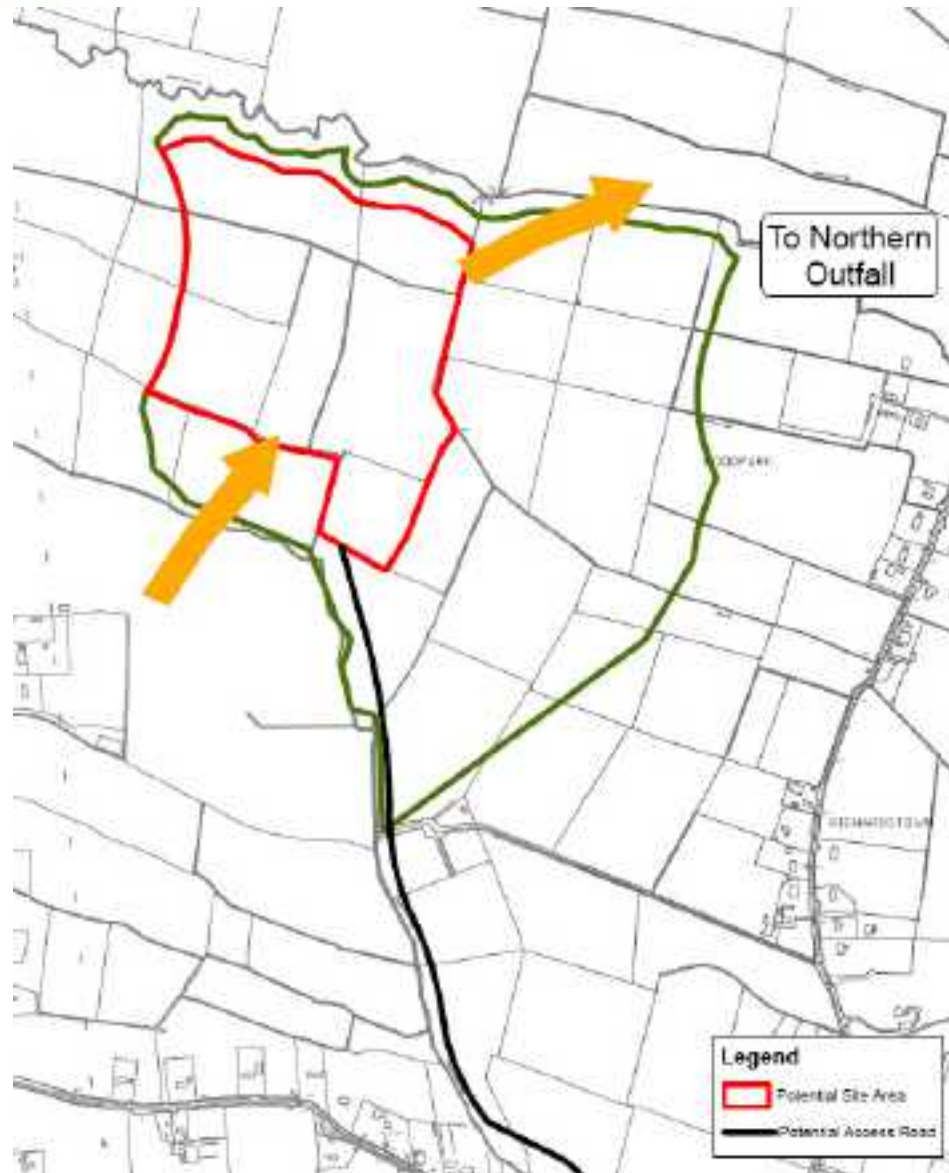




# Emerging Preferred Site Options

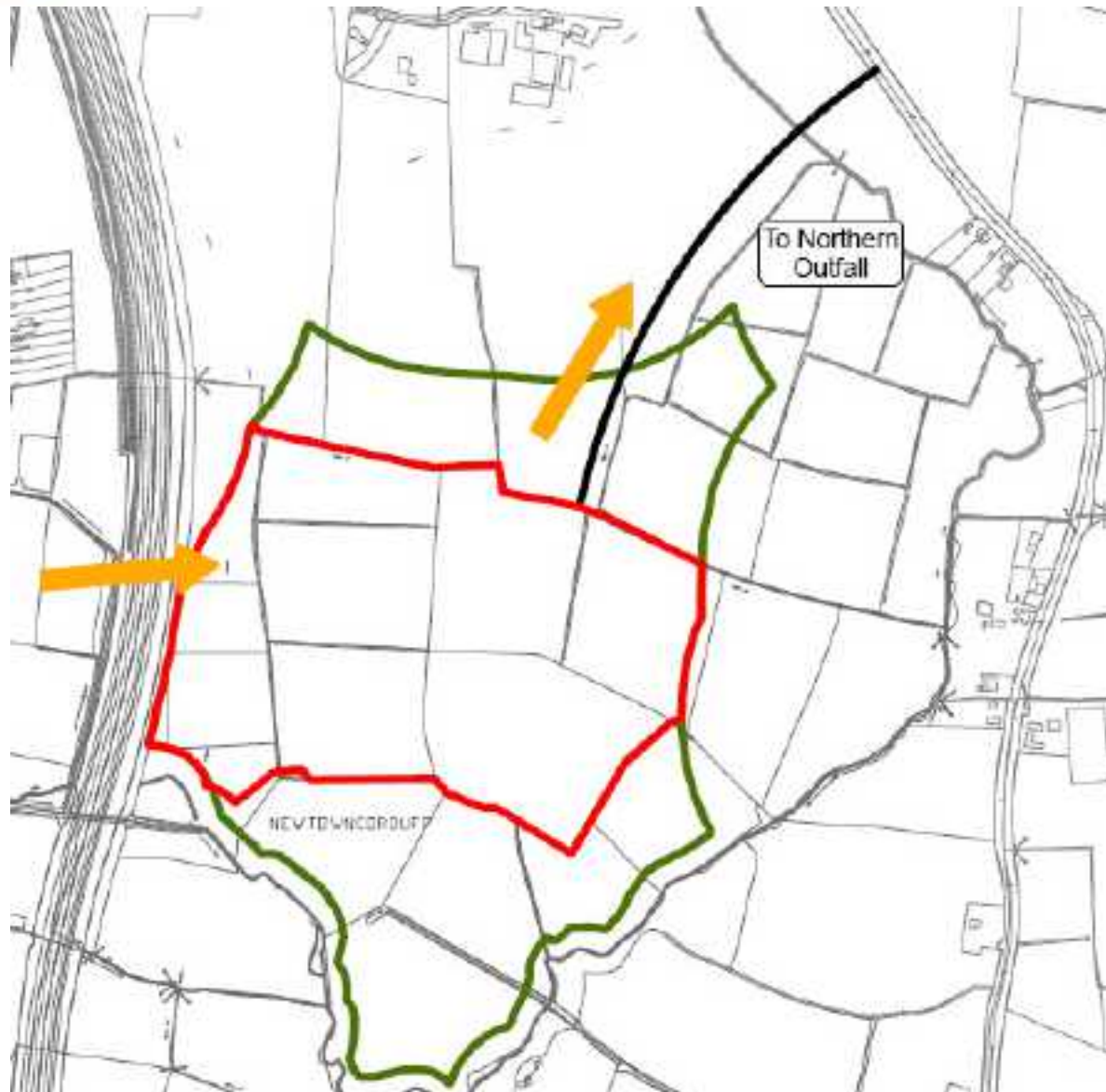


# Emerging Preferred Site Options Annsbrook



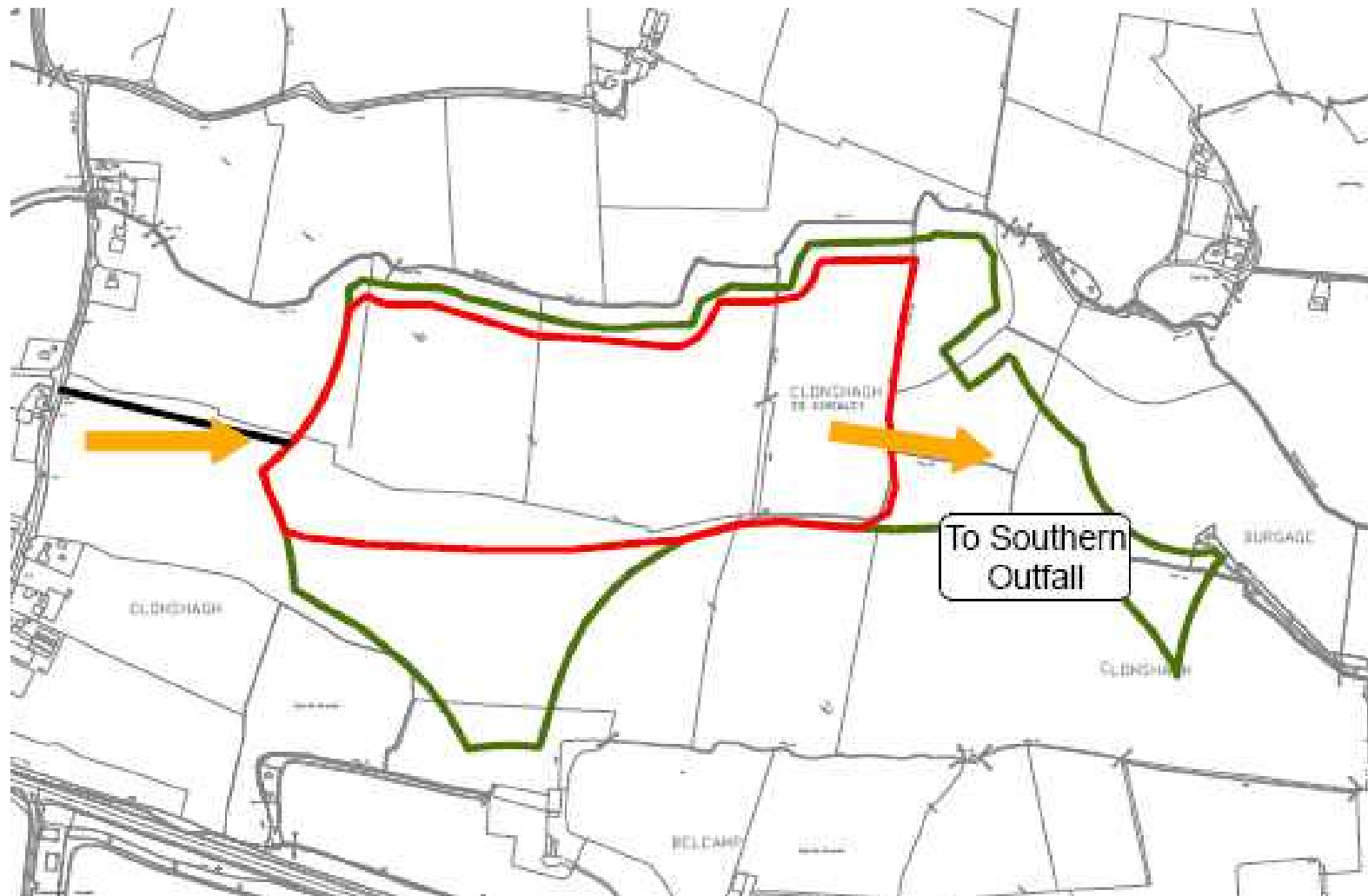


# Emerging Preferred Site Options Newtowncorduff





# Emerging Preferred Site Options Clonshagh





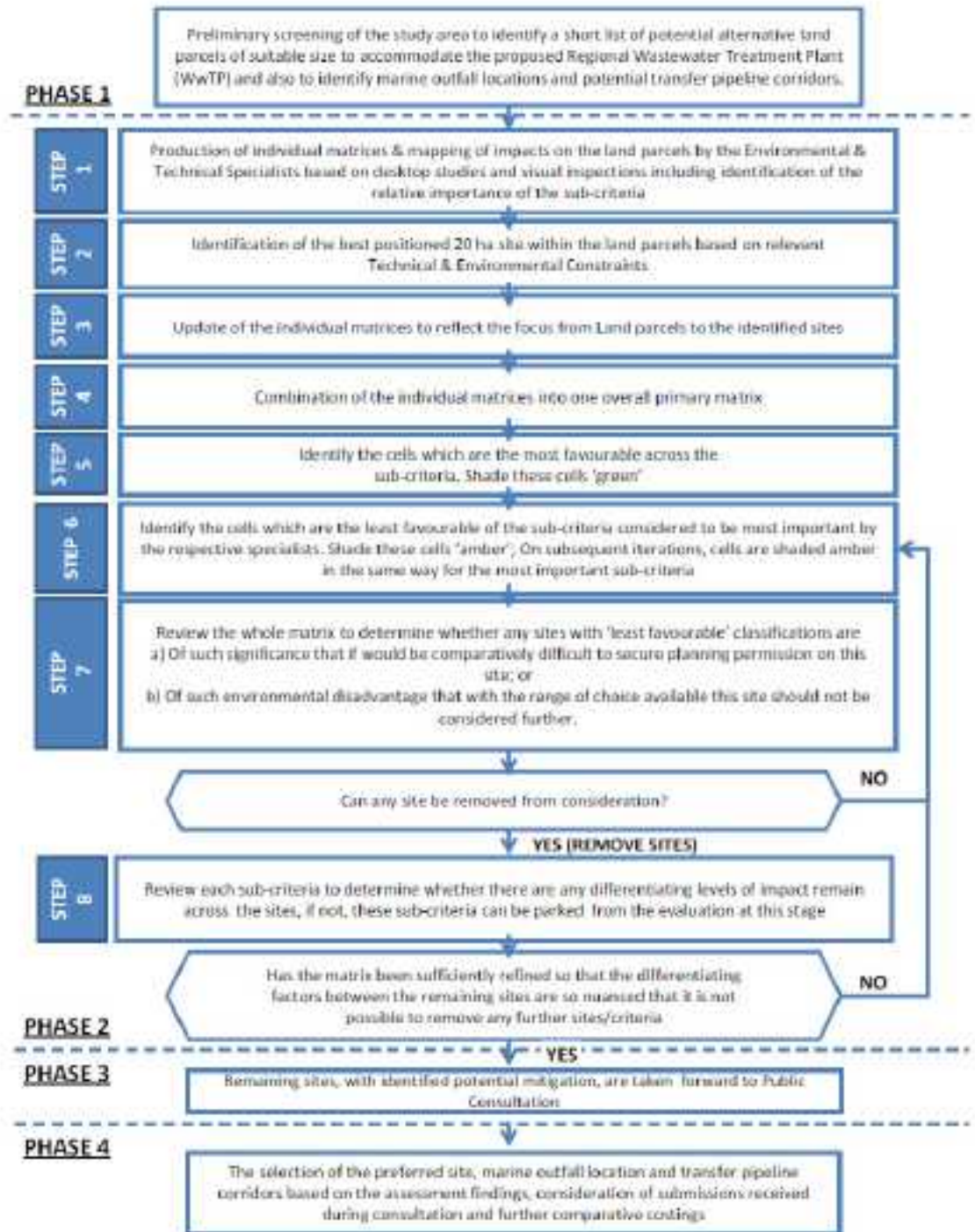
# ASA – Phase 2 Methodology

Environmental	Technical
Ecology	Safety
Cultural Heritage	Land use
Landscape & Visual	Planning Policy
Hydrology & Hydrogeology	Engineering & Design
Soils & Geology	Capital & Operational Costs
Traffic	Sustainability
Air Quality & Odour	
Noise & Vibration	
People & Communities	



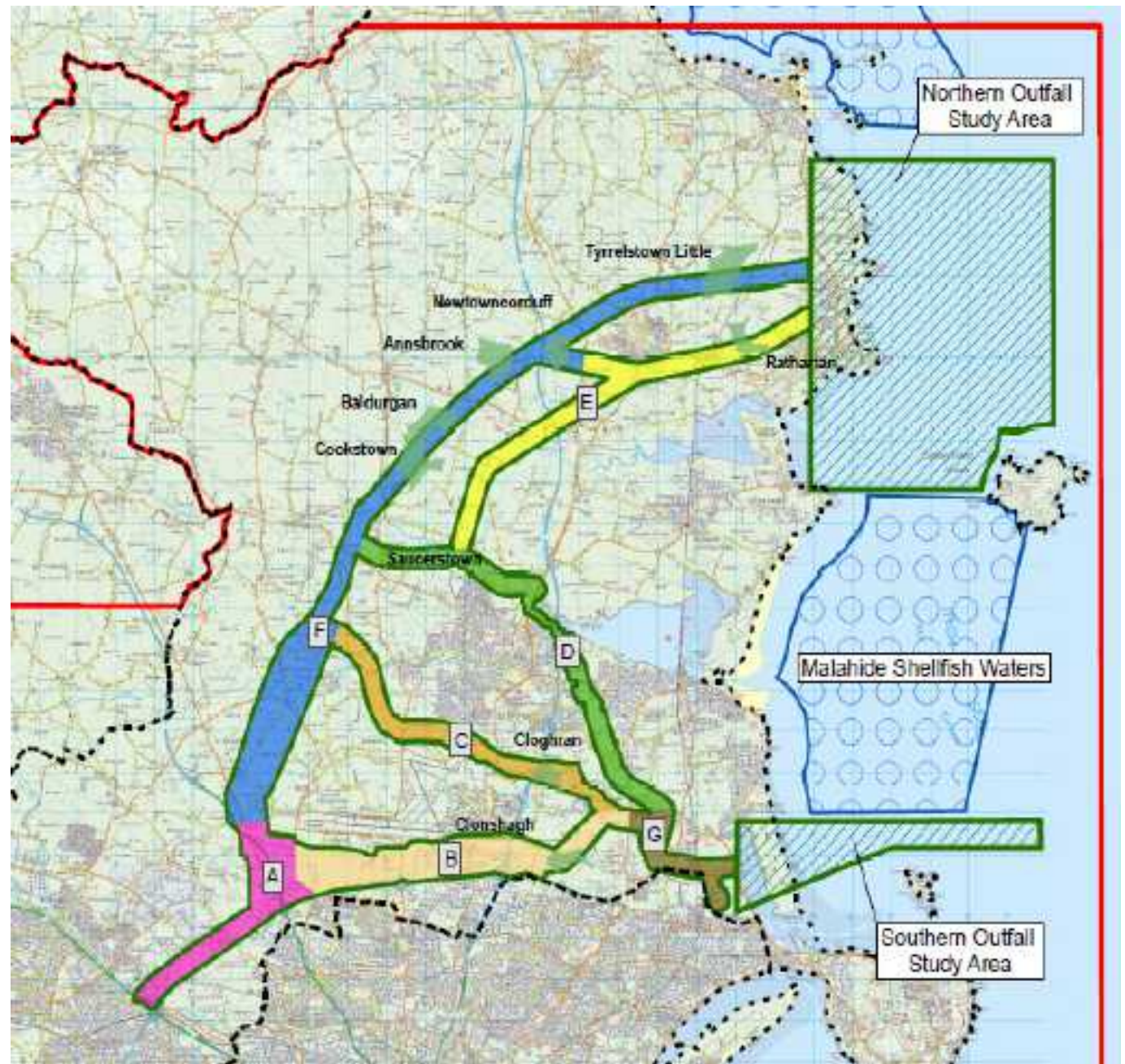
# Methodology Flow Chart

- 8 Step Process
- Steps 6 to 8 iterative



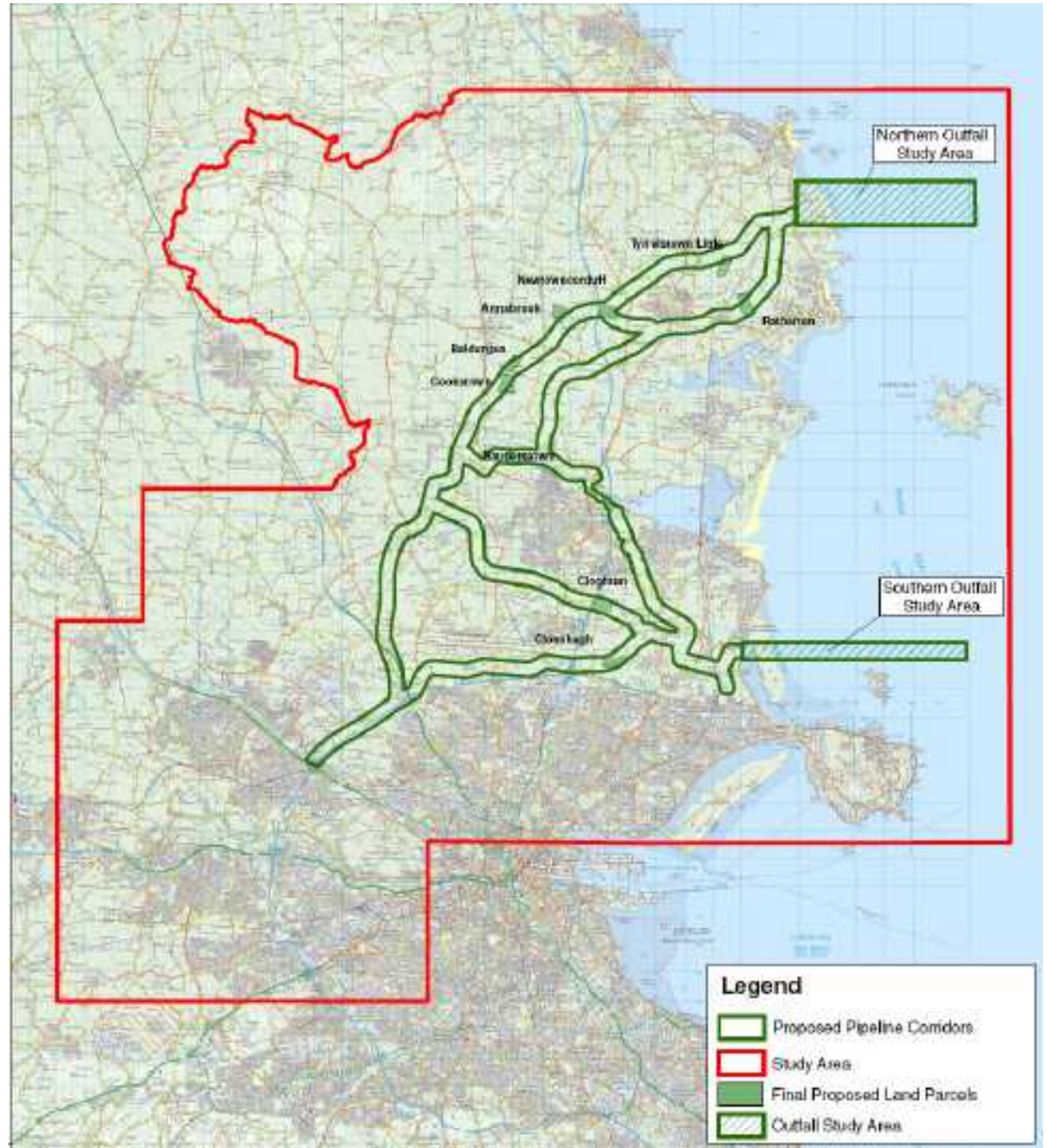


## Land Parcel Options

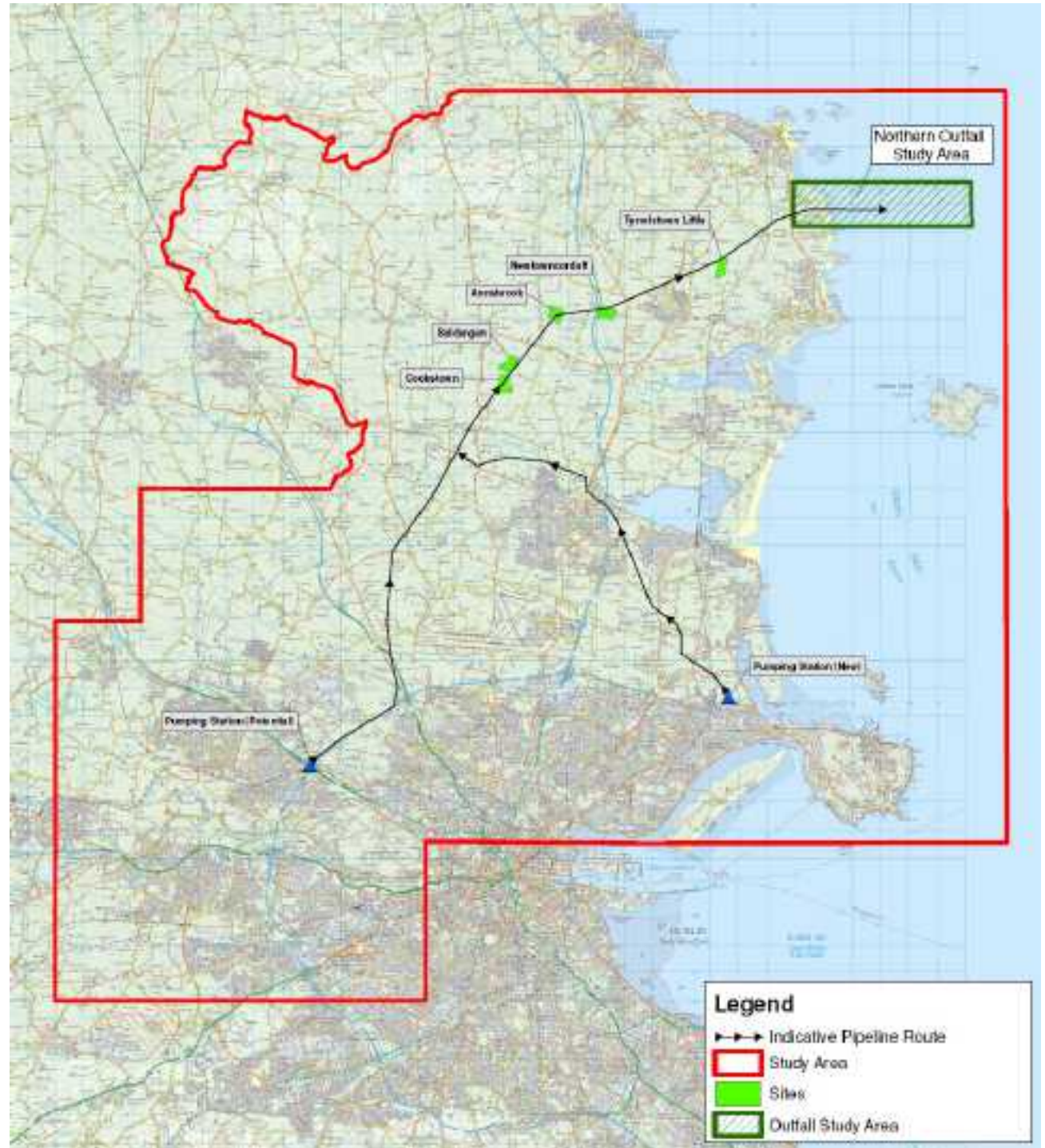




# Refinement to Site Options

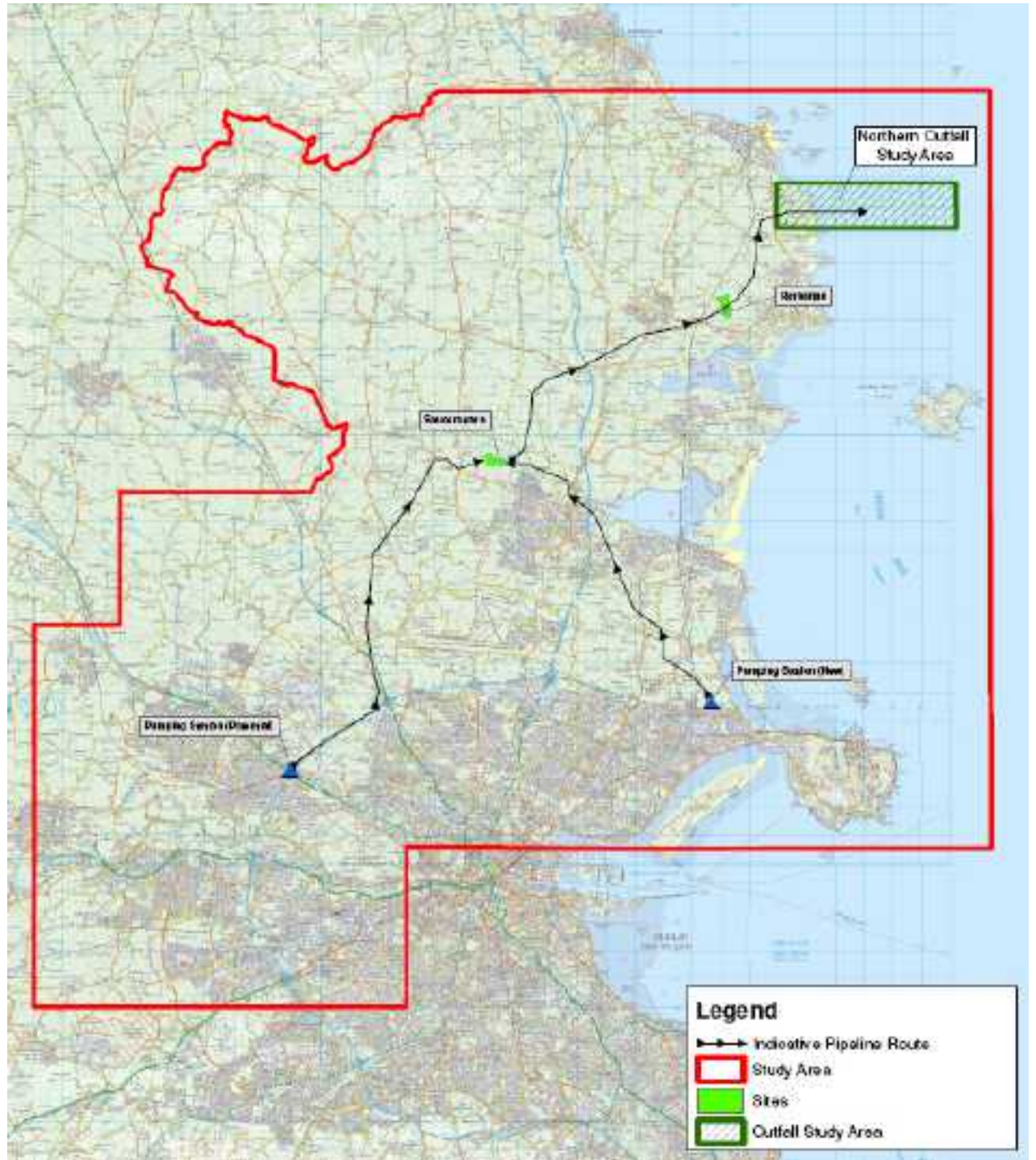


# Schematic of Site Options (1)

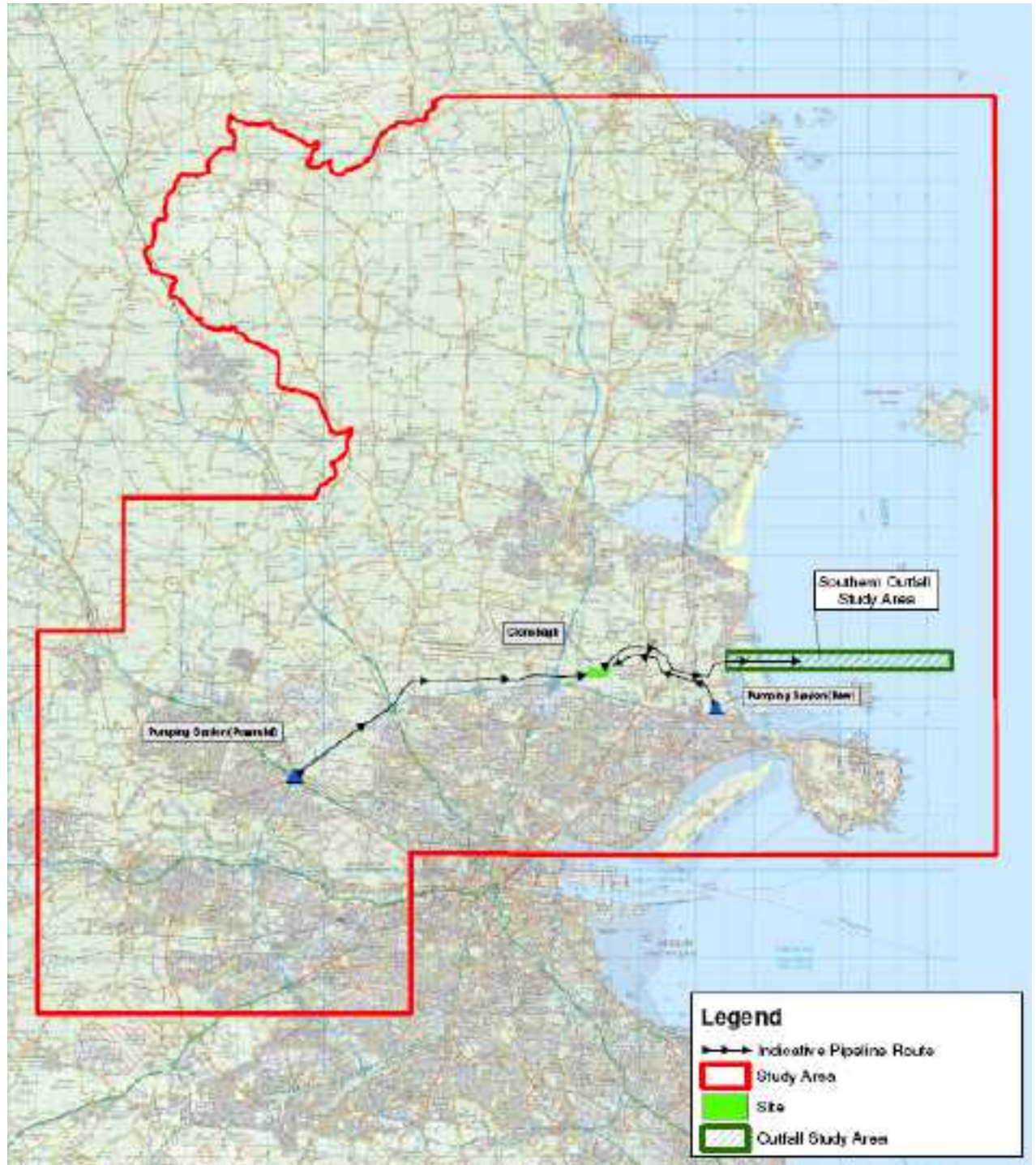




## Schematic of Site Options (2)

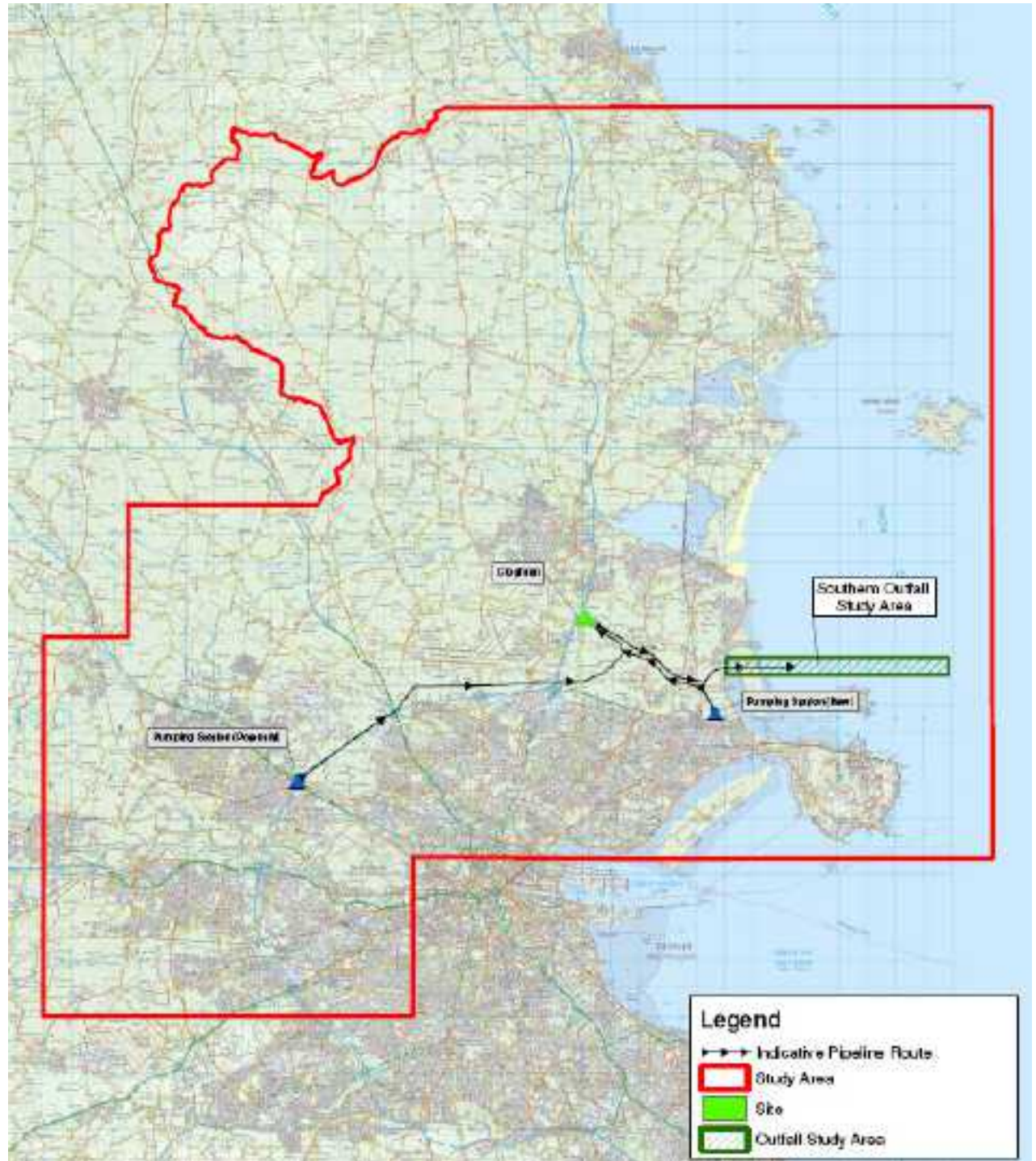


# Schematic of Site Options (3)





# Schematic of Site Options (4)







# Summary of ASA Phase 2 - Assessment

## Site Options Removed from further Consideration

- Saucerstown
- Tyrellstown Little
- Rathartan
- Cloghran
- Cookstown
- Baldurgan

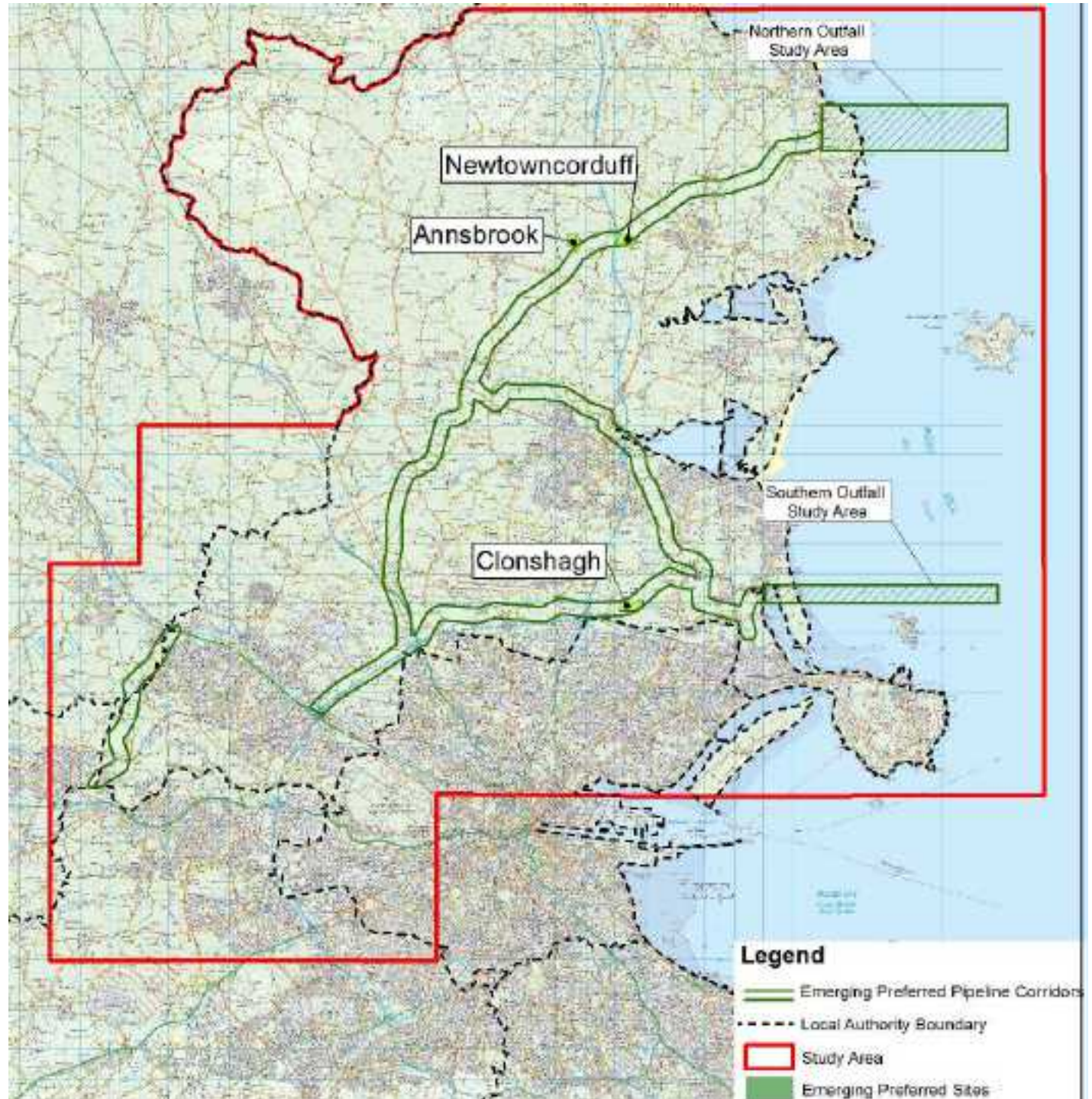


# Emerging Preferred Site Options

- Annsbrook
- Newtowncorduff
- Clonshagh



# Emerging Preferred Site Options



# ASA – Phases 3 & 4

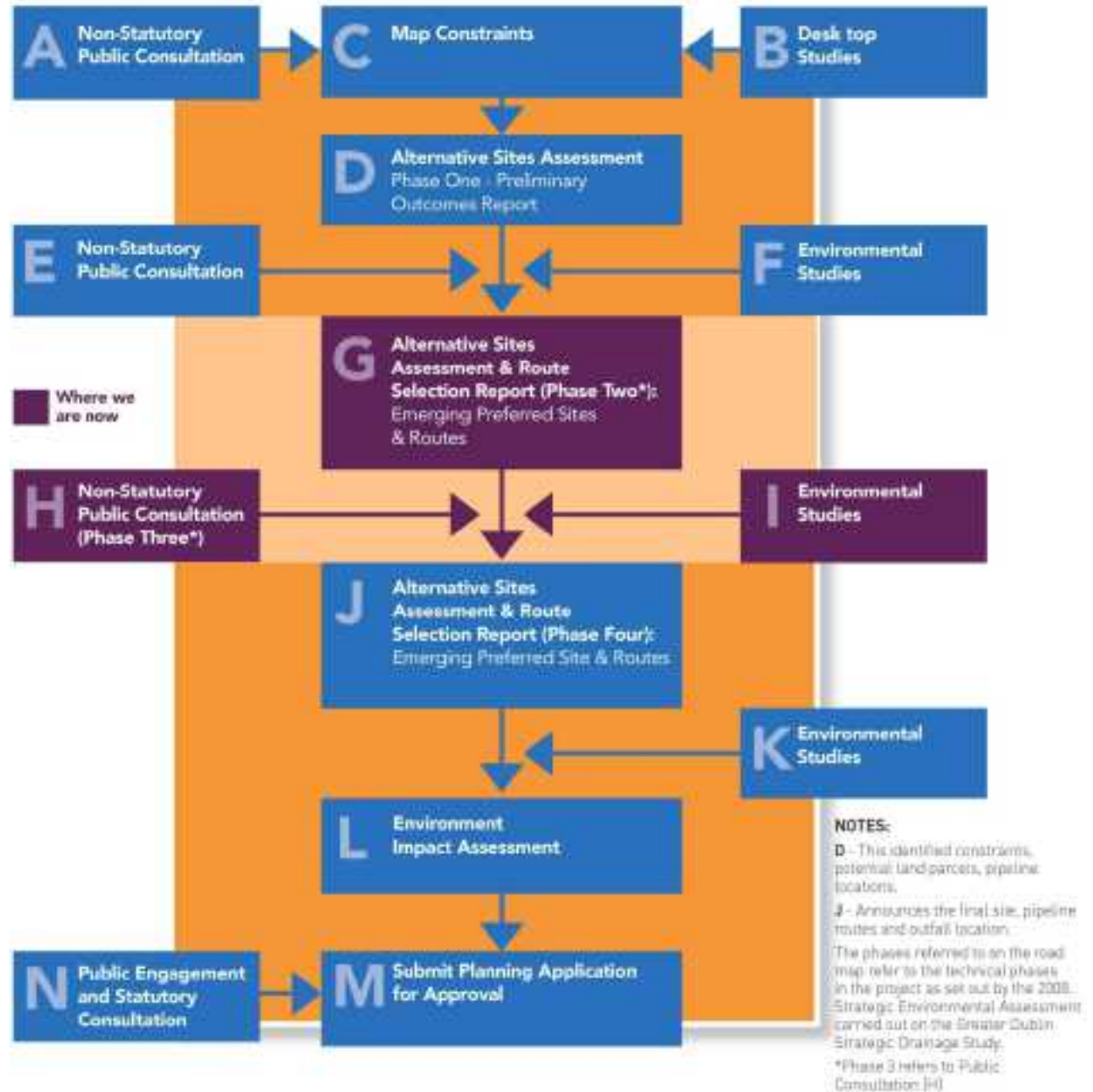
- **Phase 3 - Consultation on Emerging Preferred Site Options**
  
- **Phase 4 – Selection of Preferred Site Option**
  - **Further Assessment on Emerging Preferred Site Options**
    - **Ground Investigation**
    - **Geophysical Surveys**
    - **Cost (CAPEX & OPEX) Studies**
  - **Consideration of Issues & Concerns Raised During Phase 3**





# Consultation Strategy

## Project Road Map





# Emerging Preferred Site Options Consultation

- **Consultation 8 weeks** (14<sup>th</sup> May – 6<sup>th</sup> July)
- **Councillors**
  - Mon 14<sup>th</sup> May
- **Media briefing/press release**
  - Mon 14<sup>th</sup> May
- **Open days – FCC Offices, Swords**
  - Wed 30<sup>th</sup> May (2pm – 8pm)
  - Sat 2<sup>nd</sup> June (11am – 4pm)
  - Thur 14<sup>th</sup> June (2pm – 8pm)
  - Sat 16<sup>th</sup> June (11am – 4pm)



- **Councillors – hard copy of Report, disc with Appendices**
- **Project website [www.greaterdublindrainage.ie](http://www.greaterdublindrainage.ie) –**
  - **copies of Report, Appendices, posters, brochure**
- **Hard copies of Report - Libraries (6 in Fingal and Ballymun), North City Area Office in Coolock, County Hall Swords (2 copies), Blanchardstown**
- **All Councillors & TDs in Region - email**

# Notification

- **Landowners –**
  - registered letter (all),
  - **hand delivery to site owners (3 preferred sites)**
- **Email notification to all on database (over 900)**
- **Meetings to be arranged with landowners/stakeholder groups**



# Future Work – when Preferred Site Option Identified

- **Outline Design of Preferred Site Option**
- **EIA on Preferred Site Option**
- **Submission of Planning Application to ABP – (2013).**





# Greater Dublin Drainage

## Queries

- Lo Call tel. 1890 44 55 67
- Website: [www.greaterdublindrainage.ie](http://www.greaterdublindrainage.ie)
- Email: [info@greaterdublindrainage.ie](mailto:info@greaterdublindrainage.ie)
- FCC Project Team



## Welcome to Greater Dublin Drainage, a Fingal County Council initiative.

Greater Dublin Drainage is about providing long term sustainable wastewater drainage and treatment for the Greater Dublin Area (GDA). It is about addressing our future needs and recognising our environmental, social and economic responsibilities.

The Greater Dublin Drainage initiative aims to provide the drainage infrastructure needed to allow the Greater Dublin Area to continue to develop, both socially and economically. The initiative involves the provision of a new wastewater treatment works, a marine outfall, and new drainage network in the northern part of the Greater Dublin Area. [read more](#)